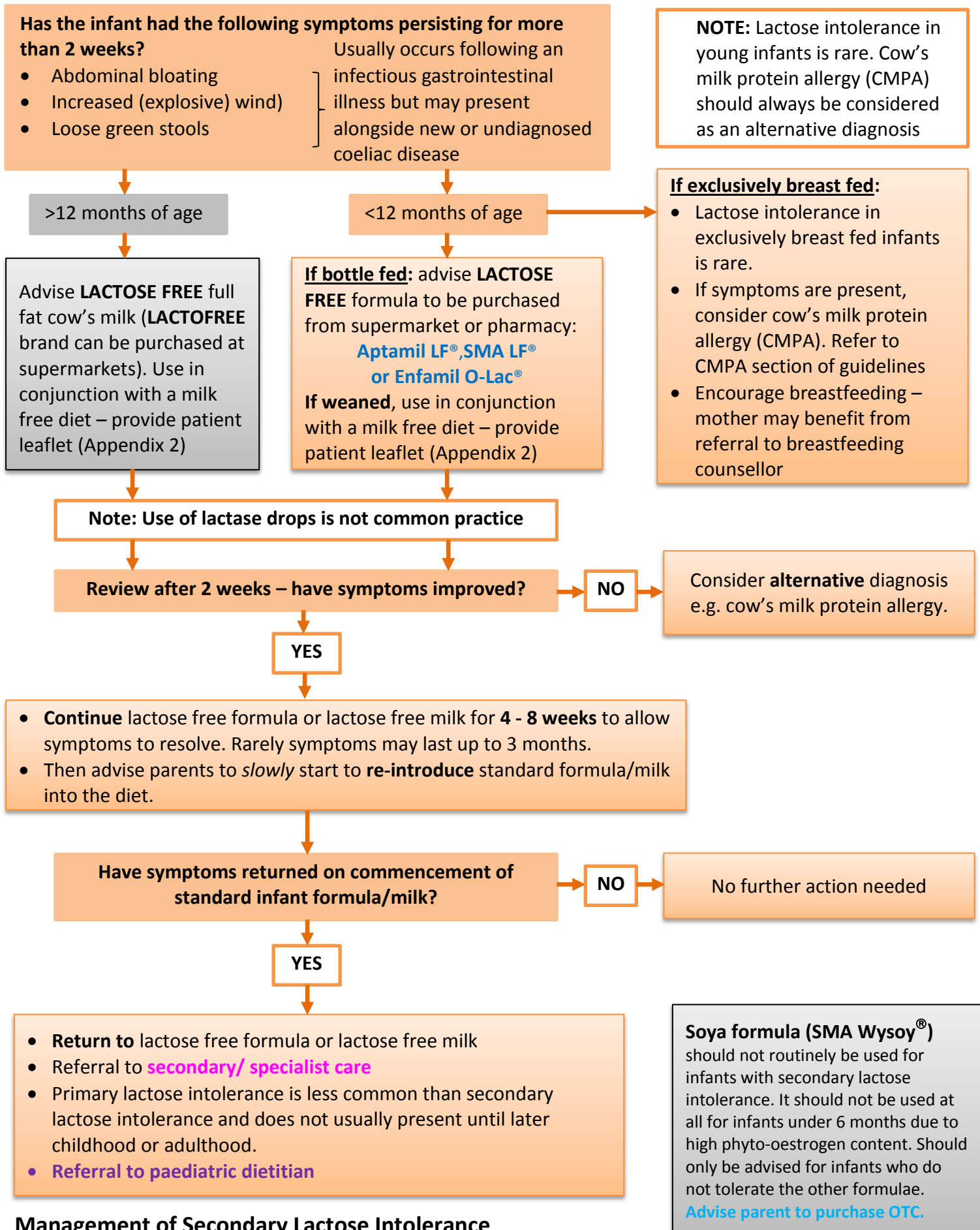


FLOW CHART FOR MANAGING SECONDARY LACTOSE INTOLERANCE



Costs of Specialist Infant Formulae

LACTOSE FREE FORMULA for Secondary Lactose Intolerance

The following are available to buy over-the-counter at high street pharmacies or supermarkets and are similar cost to standard infant formula – do NOT routinely prescribe on NHS prescription.

Product	Manufacturer	Presentation	Pack	Pack size	Retail Price	
Aptamil LF [®]	Aptamil	Powder	Tin	400g	£5.50	Approximate retail prices March 2016
SMA LF [®]	SMA Nutrition	Powder	Tin	430g	£6.00	
*Enfamil O-Lac [®]	Mead Johnson	Powder	Tin	400g	£6.60	

*May need to be ordered from a pharmacy

National and Local Spend

These guidelines consider both clinical and cost effectiveness in its recommendations. Some products may not be the least expensive but are considered the most appropriate first line product for the condition.

Soya based infant formulae are similar in cost to standard infant formulae and are readily available to buy over the counter (OTC) from pharmacies and supermarkets. Parents/carers should be advised to purchase OTC. Cost savings can be achieved by not routinely prescribing these products in primary care. Local annual prescribing spend for this indication - £4.7k for ENHCCG and £5k for HVCCG.

Acknowledgements, References and Appendices: Please refer to the full document: Hertfordshire Guidelines on Specialist Infant Feeds (HMMC) Feb 2015 (Updated June 2016).