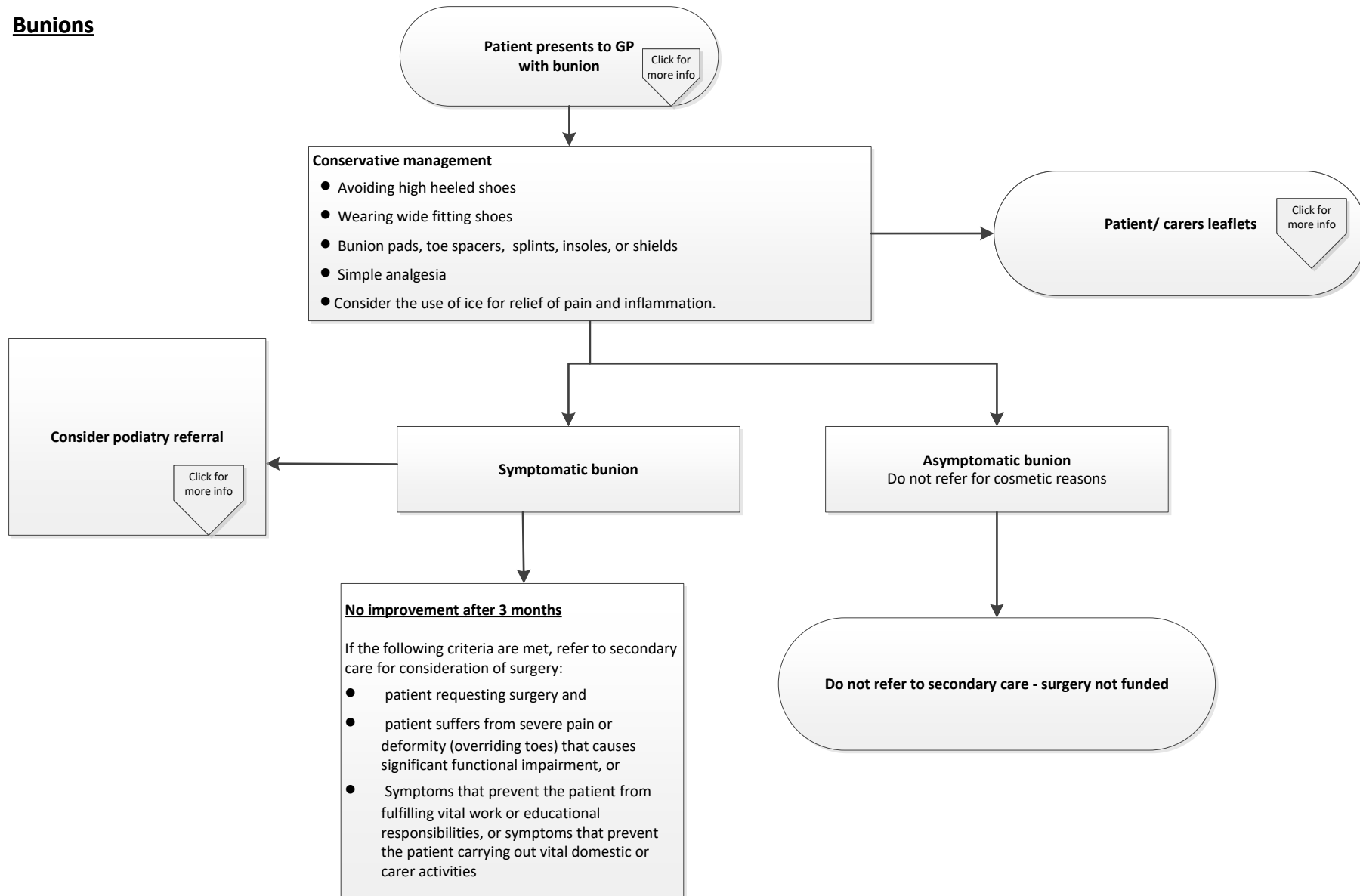



Bunions





Go back to
Pathway

Podiatry sees patients with a medical condition that places their feet at risk, e.g. diabetes or rheumatoid arthritis.


Those patients are risk assessed for ulceration.

Some low risk patients after triage are seen for a single appointment.

Referrals that just state 'bunions' without any medical conditions are not usually accepted. Options include MSK and first contact physiotherapy.

Click for
more info

Routine XR is not required unless diagnostic doubt or atypical presentation



Click for
more info

[Patient UK - Bunions leaflet](#)

[NHS UK - NHS leaflet Bunions.](#)