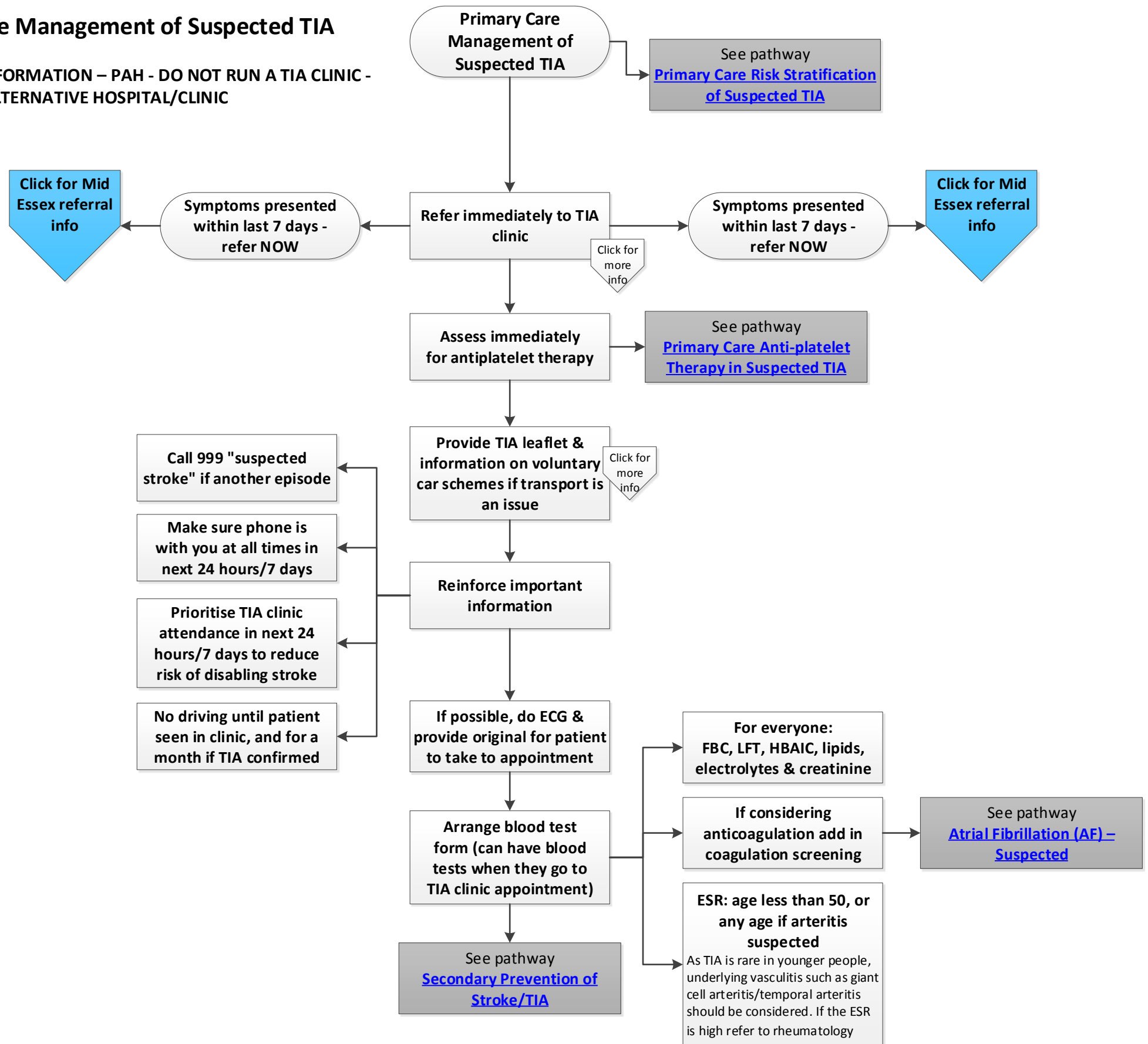


# Primary Care Management of Suspected TIA

**IMPORTANT INFORMATION – PAH - DO NOT RUN A TIA CLINIC - REFER TO AN ALTERNATIVE HOSPITAL/CLINIC**





## **Refer immediately to TIA clinic**

The purpose of risk stratification is to identify those at most risk of an early stroke, within 7 days of the initial presentation.

*These patients will be seen within 24 hours of, (target 60%) whereas those with an initial TIA presentation of over 7 day standing will be seen within 7 days (target 65).*

The time periods apply to when the patient first presented – NOT when the episode occurred.

Back to  
pathway

## Mid Essex referral information

### **Mid Essex Hospital Trust**

*Court Road, Broomfield, Chelmsford CM1 7ET*

### **7 day TIA service**

Please note, for information governance reasons, this link will need to be downloaded and **only** work from an N3 network. The form requires you to complete a history and risk factors but will automatically calculate *the ABCD2 score*.

If you have any queries or are unable to make an online referral (during a home visit for example) please contact *Broomfield Hospital/ team*:

- Broomfield acute stroke team through the hospital switchboard. 01245 362000 on bleep #6555 2555

Please Note: If your patient has experienced any unconsciousness during the episode then they have NOT experienced a TIA.

Please do not refer the patient to the Stroke Service.



## **Provide TIA leaflet & information on voluntary car schemes if transport is an issue**

It is important to stress to the patient the need to attend the appointment, even though it may not be at their local hospital. The TIA leaflet included provides further information to support this course of action.

### **Voluntary Car Schemes**

Welwyn Hatfield: <http://www.whcvs.org.uk/community-car-scheme/>

East Herts: <http://drivenbythecommunity.org.uk/>

North Herts & Stevenage: <http://www.nhcvstransport.org.uk/>

Broxbourne: <https://www.broxbourne.gov.uk/resident-health-and-wellbeing/transport-hospital>

Link to TIA leaflet from Patient Info: <http://patient.info/health/transient-ischaemic-attack>