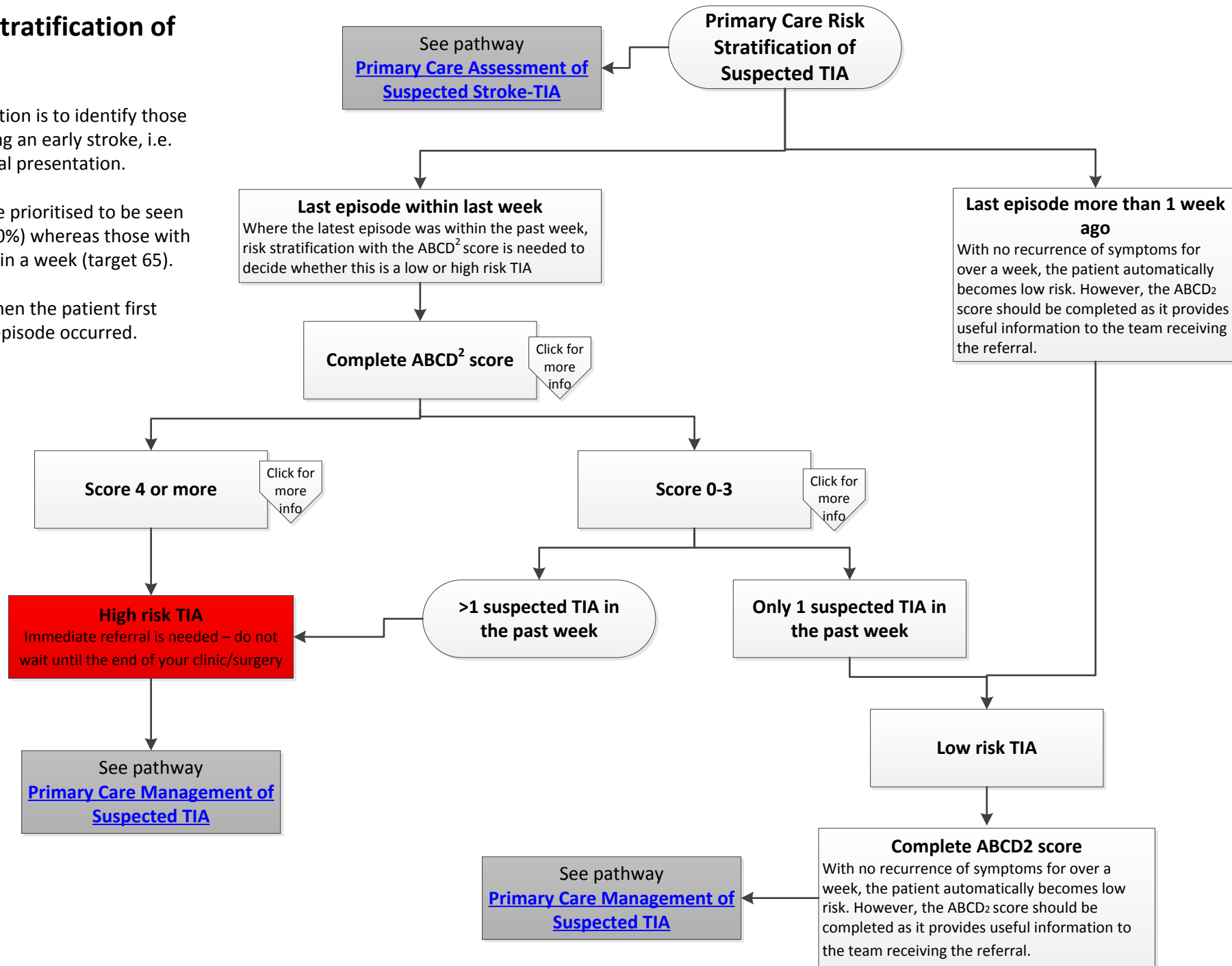


Primary Care Risk Stratification of Suspected TIA

The purpose of risk stratification is to identify those who are at most risk of having an early stroke, i.e. within a few days of the initial presentation.

Those with a high risk TIA are prioritised to be seen within 24 hours of, (target 60%) whereas those with lower risk TIAs are seen within a week (target 65).

The time periods apply to when the patient first presented – NOT when the episode occurred.





Complete ABCD² score

See: <https://www.gpnotebook.co.uk/> for information about stroke risk at 2, 7 30 and 90 days with different ABCD² risks.

The ABCD² score is embedded within the TIA referral form

TIA - High & Low Risk referral form

Back to
pathway

Score 4 or more

Risk of stroke increases with the ABCD² score:

ABCD² score 4:

- Risk of Stroke at 2 days - 3.5%
- Risk of Stroke at 7 days - 5%
- Risk of Stroke at 30 days - 7%
- Risk of Stroke at 90 days - 8%

ABCD² score 5:

- Risk of Stroke at 2 days - 5%
- Risk of Stroke at 7 days - 7%
- Risk of Stroke at 30 days - 9%
- Risk of Stroke at 90 days - 12%

ABCD² score 6:

- Risk of Stroke at 2 days - 8%
- Risk of Stroke at 7 days - 12%
- Risk of Stroke at 30 days - 15%
- Risk of Stroke at 90 days - 17%

ABCD² score 7:

- Risk of Stroke at 2 days - 6%
- Risk of Stroke at 7 days - 12%
- Risk of Stroke at 30 days - 17%
- Risk of Stroke at 90 days - 22%



Score 0-3

Risk of stroke with ABCD2 scores of 0-3 is much lower, which is why the patients are not priorities to be seen within 24 hours of presentation:

ABCD² score 0:

- Risk of Stroke at 2 days - 0%
- Risk of Stroke at 7 days - 0%
- Risk of Stroke at 30 days - 0%
- Risk of Stroke at 90 days - 0%

ABCD² score 1:

- Risk of Stroke at 2 days - 0%
- Risk of Stroke at 7 days - 0%
- Risk of Stroke at 30 days - 1%
- Risk of Stroke at 90 days - 2%

ABCD² score 2:

- Risk of Stroke at 2 days - 1.1%
- Risk of Stroke at 7 days - 1.2%
- Risk of Stroke at 30 days - 2%
- Risk of Stroke at 90 days - 3%

ABCD² score 3:

- Risk of Stroke at 2 days - 1.1%
- Risk of Stroke at 7 days - 1.2%
- Risk of Stroke at 30 days - 2%
- Risk of Stroke at 90 days - 3%

This does not apply to those who have had more than one event in the past week: this implies an unstable plaque which confers a significantly higher risk of proceeding to stroke