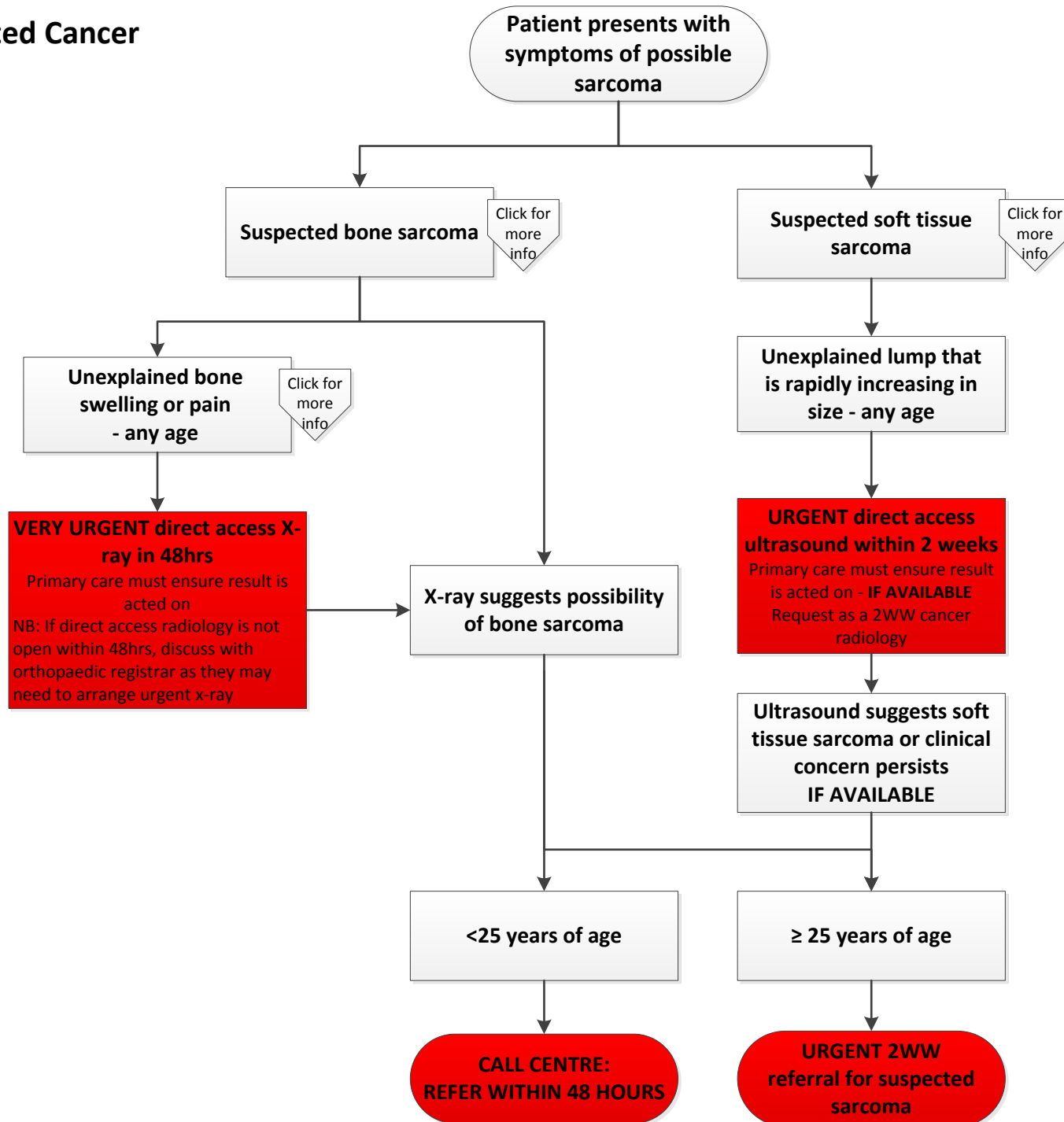


Sarcoma - Suspected Cancer



Back to
pathway

Suspected Bone Sarcoma

Patients with bone sarcoma often present with:

- persistent, non-mechanical pain in any bone, lasting more than a few weeks
- emergence of a new bony lump or mass, although swelling will be present only if the tumour has progressed through the cortex and distended the periosteum
- tenderness in the affected area spontaneous or pathological fracture, eg unusually low-energy trauma
- progressive pain
- unexplained limp

Patients with Ewing's sarcoma may also present with:

- fever
- weight loss
- fatigue

NB: Symptoms of malignant bone tumours cannot be reliably distinguished from a number of benign conditions.

Back to
pathway

Unexplained bone swelling or pain - any age

Patients with bone sarcoma often present with:

- persistent, non-mechanical pain in any bone, lasting more than a few weeks
- emergence of a new bony lump or mass, although swelling will be present only if the tumour has progressed through the cortex and distended the periosteum
- tenderness in the affected area spontaneous or pathological fracture, e.g. unusually low-energy trauma
- progressive pain
- unexplained limp

Patients with Ewing's sarcoma may also present with:

- fever
- weight loss

Sarcoma - Suspected Cancer

- fatigue

NB: Symptoms of malignant bone tumours cannot be reliably distinguished from a number of benign conditions

Back to
pathway

Suspected soft tissue sarcoma

- palpable lump >5cms
- lump deep to the fascia (harder to feel when muscle tense)
- fixed/ immobile lump
- painful lump
- lump increasing in size
- lumps at site of previous sarcoma excision

NICE recommends investigating unexplained lumps that are growing in size.